

YOUR BUSINESS PARTNER --- A SYSTEM FOR YOU



IVECO

Your partner for sustainable transport



IVECO

**F O R
T H O S E
W H O
G O**

FULL OFFERING THE BEST SOLUTION FOR EVERY JOB

Making the business of transportation easier and more productive is our goal. So we offer you:

- Strong and resistant vehicles for every load and every mission
- Reliable quality that won't let you down when you have to complete a job
- Modern and powerful engines for a safe and rewarding drive
- Consumption and operating costs that support your profitability
- European technology recognised around the world
- Long-lasting value
- A widespread and professional assistance network
- 24/7 customer service
- Extensive offer of financial solutions

Iveco is the only manufacturer in the world that covers all sectors of light, medium, heavy, special, on-road and off-road vehicles with the Iveco brand only - no sub-brands.

EXTRA HEAVY

HEAVY

MEDIUM

LIGHT

ON ROAD

OFF ROAD

PASSENGERS



ASTRA



682 EVO

PERFORMER

STRALIS



ASTRA



682 EVO

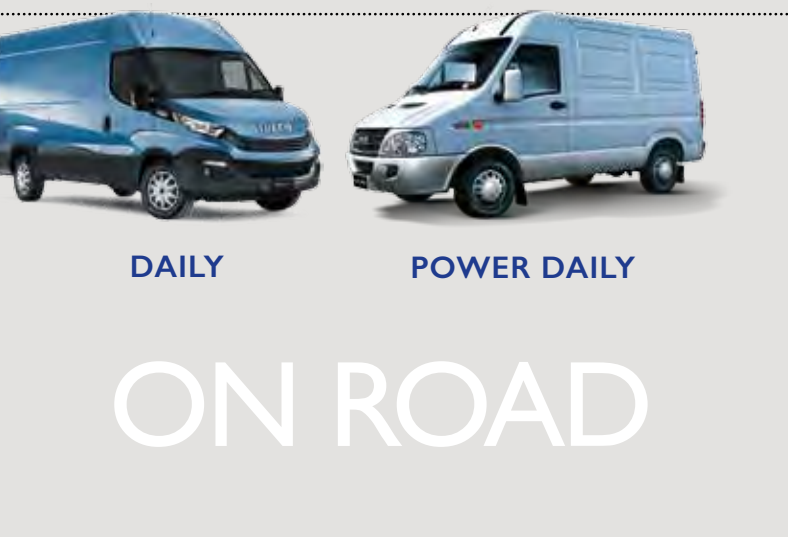
TRAKKER



EUROCARGO*



EUROCARGO 4x4*



DAILY

POWER DAILY



DAILY 4x4



MAGELYS

CROSSWAY

URBANWAY

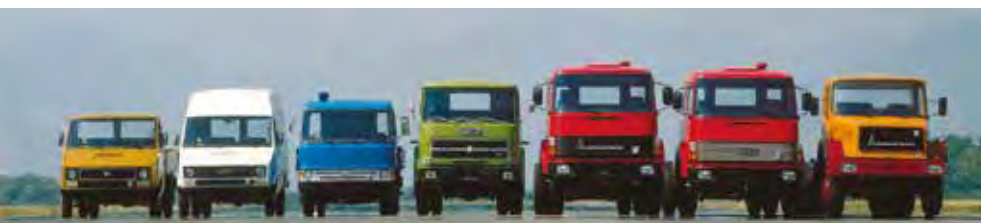


DAILY MINIBUS

POWER DAILY MINIBUS

* New Eurocargo available from 2017

IVECO: 40 YEARS OF QUALITY IN CARGO AND PASSENGER TRANSPORTATION



Turin, Italy: a historic hub of the European motor industry.

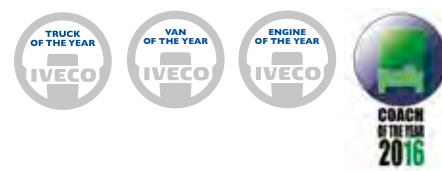
Fiat, Lancia, OM, and then Pininfarina, Bertone, Ghia, Giugiaro and many others were founded in Turin, where they were - or are to this date - headquartered.

The '70s: the first oil crisis. The European industry went back to the drawing board and broadened its horizons. Old enemies teamed up and major new groups arose to tackle the challenges of the global market.

1st January 1975: Iveco (Industrial Vehicles Corporation), a new European group, began its journey in Turin. It combined the Italian Fiat Veicoli Industriali, OM and Lancia Veicoli Industriali, the French Unic and the German Magirus-Deutz. It was later joined by the Italian Astra with its dumpers and the Spanish Pegaso with its trucks, buses and agricultural tractors.

Each of the companies that came together to form Iveco had already achieved success, won awards and recognition, and produced models that had shaped the history of on-road and off-road transport.

In 2013, Iveco became part of the Fiat Industrial group and then CNH Industrial. It designs and manufactures heavy on-road and off-road trucks, medium and light trucks, quarry/building site vehicles, fire trucks, defence and civil protection vehicles, as well as city and intercity buses. It is present in over 160 countries around the world and has production plants in 14 countries throughout Europe, Asia, Africa, Oceania and Latin America.



AWARDS

1992

EURO CARGO
TRUCK OF THE YEAR

1993

EUROTECH TRUCK OF THE YEAR
The first manufacturer ever to win two years running

1995

EUROCLASS HD
COACH OF THE YEAR

2000

DAILY
VAN OF THE YEAR

2003

STRALIS
TRUCK OF THE YEAR

2013

STRALIS HI-WAY
TRUCK OF THE YEAR

2014

CUSOR 16
ENGINE OF THE YEAR

2015

DAILY
VAN OF THE YEAR

2016

MAGELYS
COACH OF THE YEAR

2016

EURO CARGO
TRUCK OF THE YEAR



THE TURBO DIESEL COMMON-RAIL TECHNOLOGY

Born in the Fiat Group and then spread out across the whole automotive world. With the common-rail injection, high-pressure Diesel is perfectly atomised even at low speeds, so it always burns in a quick, controlled and constant way, with **huge benefits in terms of fuel consumption.**

In the Cursor engines, high torque at low speeds is also due to the waste gate turbo system or the variable geometry turbine. The result is **improved acceleration** and driveability, and **greater durability** of the clutch and the gearbox. The in-line 6-cylinder architecture with overhead camshaft and rear-mounted timing gear generates less noise and vibration, while ensuring fluid responsiveness in every situation, with obvious benefits for comfort and engine life. Every detail of the Cursor engines has been designed for maximum efficiency:

- aluminium piston heads facilitate heat dispersal
- smoother cylinder liners and the configuration of the piston rings minimise friction
- the four valves per cylinder maximise the efficiency of air flow and exhaust scavenging.

THE CURSOR ENGINE A PROTAGONIST IN THE HEAVY-DUTY WORLD

The Cursor engine is one of the main engines used in heavy vehicles. First developed and manufactured by Iveco Motori (now FPT) in 1998, today it is sold all over the world and even to some of our competitors. In different versions it is also used in boats, power generators, buses and agricultural machinery. The most distinctive characteristics of the Cursor engines are **outstanding performance, reliability and durability**, as well as class-leading oil change intervals (made possible by a patented blow-by oil vapour recovery system), which translate into **very low operating costs** for the client. In one word: **productivity.**

CNH INDUSTRIAL

The Group is a global leader in the Capital Goods sector with a significant industrial base, an extensive range of products and a worldwide presence. All the Group's brands are major international players in their respective sectors.

AGRICULTURAL EQUIPMENT



CONSTRUCTION EQUIPMENT



COMMERCIAL VEHICLES



POWERTRAIN



FINANCIAL SERVICES



more info: cnhindustrial.com



ROBUST, RELIABLE, DURABLE AS NO OTHER

The new Iveco quarry and construction vehicle redefines the meaning of impossible. It raises productivity beyond all limits and protects the value of your investment.

FOR THOSE WHO GO FOR THE IMPOSSIBLE: T R A K K E R

When you face arduous applications, harsh conditions and hostile environments, you can count on a vehicle that's always reliable and productive, 365 days a year.

STRONG ON ECONOMY

- Lower fuel consumption, lower emissions
- Longer maintenance intervals
- Long lasting value
- Lower TCO (Total Cost of Ownership)

STRONG ON PERFORMANCE

- Euro 3 13-litre Cursor engines
- High torque delivery even below 1000 rpm
- Latest-generation INTARDER

STRONG ON DESIGN

- New, stronger design in every detail
- Smart, practical solutions
- Optimised bumper design

OUTSTANDING COMFORT

- Three cab versions
- Adjustable steering wheel and controls at your fingertips
- New dashboard with ergonomically positioned, easy-to-reach switchgear

MADE TO LAST

- Frame in flexible, high-yield-strength steel
- Decompression engine braking system combined with variable-geometry or waste-gate turbo
- Elements assistance and maintenance programme
- **Origin 100% Iveco** spare parts.

| ENGINES | WHEELBASES | CABS |
|--|--|--|
| <ul style="list-style-type: none"> ■ Cursor 13 ■ 380, 420 and 440 HP ■ 6 cylinders, 12,880 cc. ■ 16 speed mechanical and 16 speed automated ZF gearboxes | <ul style="list-style-type: none"> ■ 8, ranging from 3200 to 5820 mm ■ Parabolic or Semielliptic suspensions | <ul style="list-style-type: none"> ■ HI-LAND ■ HI-TRACK Low Roof ■ HI-TRACK High Roof |



HEAVY ABOVE 18 TON

DELIVERY/ HAULAGE

DOMESTIC/INTERNATIONAL

- Goods transport/general haulage
- Controlled temperature
- Car transport
- Liquid transport
- ... and more

BURKINA FASO >

200 Trakker 6X4 Tractor for KANIS Logistique
Mission: Logistics- Material Transport



BEST WITH...

- Trakker HI-TRACK
- 4x2 Tractor + Semi Trailer
- 420 HP
- Large "C" section chassis
- 40 t payload

MUNICIPALITY & SERVICES

- Garbage compactor
- Aerial lift
- Recovery transport
- Sewage/waste
- Winter services
- Airport service truck

BEST WITH...

- Trakker HI-LAND
- 6x4
- 380 HP
- Large "C" section chassis
- 25 t payload



HEAVY OFF-ROAD | TRAKKER



T R A K K E R

"There's no job it can't do."

MAIN MISSIONS

CONSTRUCTION

CONSTRUCTION MATERIAL TRANSPORT

- Tipper
- Liquid transport
- Container transport
- Flat bed
- Asphalt transport

- Concrete mixer & pump
- Tipper
- Crane & crane hooklift
- Tanker
- Mobile workshop

EGYPT >

60 units AD 410T42H
10m³ Mixer for
Arab Contractors
Mission: Construction projects

BEST WITH...

- Trakker HI-LAND
- 8x4, 6x4
- 420 HP
- Large "C" section chassis
- 30 t payload



RALLY

Iveco triumphs at the Dakar 2016

Iveco dominated one of the most competitive Dakar ever with **five different truck brands in the Top 10**. Gerard De Rooy, leader of Team Petronas De Rooy Iveco, won the 2016 edition. His performance over the thirteen stages showed once again the pilot's outstanding driving skills and confirmed the Iveco Powerstar's qualities.



FOR ANY LOAD,
ANY ROAD,
ANY WEATHER

Featuring the all-new three-axle 6x4 version for greater traction and sustained performance in long distance haulage, the Performer tractor series is the best fusion of comfort and robustness.

FOR THOSE WHO GO FOR
TOUGH:
P E R F O R M E R

Strong and reliable. When the going gets tough, a Performer always delivers.

- Reliability and power: Cursor 13 engine, ranging from 380 up to 440 HP with a maximum torque of 2100 Nm
- Safety: disk or drum brakes with EBL system
- Economy: single reduction rear axle for high commercial speed and reduced fuel consumption
- Payload: 2 inches Jost 5th wheel for up to 60 ton GCV
- Comfort: spacious cab with bunk, low or high roof, air conditioning, external sun visors
- Strength: high resistance steel chassis frame 7.7 mm thick with semielliptic suspensions
- Functionality: 315/80 R 22.5 mixed route tyres with manual or automated gearbox
- Aerodynamics: roof spoiler and side deflectors.

| ENGINES | WHEELBASES | CABS |
|---|---|--|
| <ul style="list-style-type: none">■ Cursor 13■ 380, 420, 440 HP■ 6 cylinders, 12.9 lt | <ul style="list-style-type: none">■ 3, ranging from 3200 up to 3800 | <ul style="list-style-type: none">■ HI-LAND■ HI-TRACK Low Roof■ HI-TRACK High Roof |

MAIN MISSIONS
HEAVY - ABOVE 18 TON
DELIVERY/HAULAGE

DOMESTIC/INTERNATIONAL

- Multi-drop distribution
- Food&beverage
- Controlled temperature
- Goods transport/general haulage
- Liquid transport
- Car transport
- ... and more



BEST WITH...

- Performer Full High Roof
- 4x2
- 420 HP
- Large "C" section chassis
- 40 t payload

CONSTRUCTION

CONSTRUCTION MATERIAL TRANSPORT

- Container transport
- Flat bed
- Asphalt transport
- Liquid transport



BEST WITH...

- Performer Full Low Roof
- 4x2, 6x4
- 420 HP
- Large "C" section chassis
- 44 t payload





THE KING IS BACK

The illustrious Fiat 682 "King of Africa", that helped to get the continent on the road in the '50s, is now a completely new vehicle: a full range with off-road capability but also with speed and comfort on the road.

FOR THOSE WHO GO FOR STRONG: 682 EVO



- **New, authentic Iveco design.** New engineering, new engines and new productivity.
- **European technology.** Value for money and uncompromising quality.
- **New Common Rail Turbo Diesel engines.** Work hard, stay on the road.
- **The full range.** Whatever your business, the perfect 682 EVO is there.
- **A real truck, built to last.** The 682 EVO is built to work hard, to maintain its value over time and to live many lives.
- **The longest warranty on many markets.** Up to 2 years or 200,000 km - just like the Trakker!

| EURO III ENGINES | WHEELBASES | CABS |
|--|--|--|
| <ul style="list-style-type: none"> ■ CURSOR 9 and CURSOR 13 ■ From 290 HP to 480 HP ■ 6 cylinders ■ 8,7 lt - 12,9 lt | <ul style="list-style-type: none"> ■ From 3300 to 5725 mm | <ul style="list-style-type: none"> ■ DAY CAB ■ SLEEPER CAB Low Roof ■ SLEEPER CAB High Roof |



HEAVY - ABOVE 18 TON

DELIVERY/ HAULAGE

DOMESTIC/INTERNATIONAL

- Multi-drop distribution
- Food&beverage
- Controlled temperature
- Goods transport/general haulage
- Liquid transport
- Car transport
- ... and more

ETHIOPIA >
60 Iveco 682
for pharmaceutical companies
Mission: isothermal body
for medicine transport

ANGOLA >
50 Iveco 682 for Angolan Government
Mission: drinkable water distribution
along Luanda municipality



BEST WITH...

- 682 SC430G48TS
- 4x2
- 480 HP
- Large "C" section chassis
- 37 t payload

GvW AND GCW

MUNICIPALITY & SERVICES

- Garbage collector
- Aerial lift
- Recovery transport
- Sewage/waste
- Airport service trucks



BEST WITH...

- 682 DC330G38H
- 6x4
- 380 HP
- Large "C" section chassis
- 27 t payload

HEAVY ON ROAD & OFF-ROAD | 682 EVO



6 8 2 E V O

Find your version. By combining the different features of the many versions of the 682 EVO, you can create a comprehensive selection, where every need finds the perfect solution.

MAIN MISSIONS



PAYLOAD & GCW

CONSTRUCTION

CONSTRUCTION MATERIAL TRANSPORT

- Tipper
- Liquid transport
- Container transport
- Flat bed
- Asphalt transport

ON SITE JOBS

- Mixer
- Concrete mixer & pump
- Tipper
- Crane
- Service trucks

BEST WITH...

- 682 DC330G38H
- 6x4
- 380 HP
- Large "C" section chassis
- 26 t payload



Special application: 682 for People Transport



FOR THE PRESENT AND FUTURE NEEDS

Stralis is the only vehicle in its class to offer such a wide and integrated range of functions for optimising costs.



FOR THOSE WHO GO
FAR:

STRALIS



2003
STRALIS
TRUCK OF THE YEAR



2013
STRALIS HI-WAY
TRUCK OF THE YEAR

HI-DESIGN AND AERODYNAMICS

A unique blend of form and efficiency, style and fuel saving. Just by improving the C drag coefficient by 3%. We gained a fuel saving of 1% in long-haul jobs, while making the cab quieter:

HI-SAFETY

- Disc brakes
- EBS system with Brake Assist
- ESP - Electronic Stability Program
- HILL HOLDER
- LDWS - Lane Departure Warning System
- ACC - Adaptive Cruise Control
- XENON HEADLIGHTS
- DLR - Daytime Running Lights

HI-QUALITY OF LIFE ON BOARD

The interiors have been **designed around the driver.**

- **controls** visible and accessible without moving away from the seat's backrest
- **new steering wheel** with pneumatic adjustment system and integrated telephone controls
- heated and ventilated **seat**
- spacious and comfortable **sleeping area** with lower bunk with a reclinable backrest, or a 3-piece bunk that turns into a **handy table.**
- additional **air conditioner** with timer, for a comfortable cab temperature with the **engine off**
- over **30 drawers and storage compartments** including a fridge
- for the longest missions, a **maxi-fridge** over 50 litres.

EURO III ENGINES

- CURSOR 8, 10, 13
- From 330 to 540 HP
- 6 cylinders
- 7.8 lt, 10.3 lt, 12.9 lt

WHEELBASES

- 13, from 2800 up to 6700 mm

CABS

- HI-STREET
- HI-ROAD Low Roof
- HI-ROAD High Roof
- HI-WAY Low Roof
- HI-WAY High Roof



ALSO AVAILABLE WITH CNG FUEL



HEAVY - ABOVE 18 TON

DELIVERY/ HAULAGE

DOMESTIC/INTERNATIONAL

- Multi-drop distribution
- Food&beverage
- Controlled temperature
- Goods transport/general haulage
- Liquid transport
- Car transport
- ... and more



TURKEY >
200 Stralis HI-road
for Mars Logistics Group in Turkey
Mission: Logistics



BEST WITH...

- Stralis HI-WAY
- 4x2
- 480 HP
- Large "C" section chassis
- GCW Up to 60 t

MUNICIPALITY & SERVICES

- Garbage collector
- Aerial lift
- Recovery transport
- Sewage/waste
- Airport service truck

BEST WITH...

- Stralis HI-STREET
- 6x2
- 430 HP
- Large "C" section chassis
- 18 t payload (GVW 26 t)



HEAVY ON ROAD | STRALIS



SAUDI ARABIA >
Stralis HI-ROAD for Global Environmental
Management Services KSA (GEMS)
Mission: Special Application (waste management)

STRALIS

"Working on the HI-WAY means spending your life on board. So you need
a big performance, great comfort, high safety levels... and a value that lasts."

MAIN MISSIONS



CONSTRUCTION

- Liquid transport
- Container transport
- Flat bed
- Asphalt transport



BEST WITH...

- Stralis HI-ROAD
- 4x2, 6x4
- 430 HP
- Large "C" section chassis
- GCW Up to 60 t



PEOPLE TRANSPORT & SPECIALTIES

- Fire fighting

BEST WITH...

- Stralis HI-STREET
- 4x2
- 430 HP
- Large "C" section chassis
- 12 t payload





PERFECT IN EVERY SITUATION

Eurocargo is a champion of reliability and flexibility, a trail-blazer in its class. It is designed to generate profit, be reliable and offer a long service life.

FOR THOSE WHO GO FOR FLEXIBLE: EURO C A R G O



New Eurocargo available from 2017



1992
EUROCARGO
TRUCK OF THE YEAR



2016
EUROCARGO
TRUCK OF THE YEAR



More than 1,000 variants:

the most comprehensive range in its class

- 8 gross vehicle weight variants (from 9 to 18 tonnes)
- 4 power ratings (from 180 to 280 HP)
- 7 transmissions (six manual, and one automatic)
- 2- and 4-wheel drive
- 12 wheelbases (from 3,105 to 6,210 mm)
- 3 types of cab.

| ENGINES | WHEELBASES | CABS |
|--|---|--|
| <ul style="list-style-type: none">■ Tector 6■ From 180 to 280 HP■ 6 cylinders■ 5.9 lt | <ul style="list-style-type: none">■ I2, ranging from 3105 up to 6570 mm | <ul style="list-style-type: none">■ MLC■ MLL Low Roof■ MLL High Roof■ MLD |



ALSO AVAILABLE WITH CNG FUEL



MEDIUM - UPTO 18 TON

DELIVERY/ HAULAGE

URBAN/DOMESTIC

- Multi-drop distribution
- Food & beverage
- Controlled temperature
- Goods transport/general haulage
- Liquid transport
- Car transport
- ... and more



BEST WITH...

- Eurocargo Long Cab High Roof
- 4x2
- 280 HP
- Large "C" section chassis
- 12,8 t payload

MUNICIPALITY & SERVICES

- Police services
- Road maintenance (sweeper)
- Garbage collector
- Aerial lift
- Recovery transport
- Sewage/waste
- Airport Services

BEST WITH...

- Eurocargo Short Cab Low Roof
- 4x2
- 220 HP
- Large "C" section chassis
- 10 t payload



IRAQ >
385 Eurocargo
for Iraq Ministry of Electricity
Mission: maintenance of the nation's
electric distribution network.

EURO CARGO

"It can handle whatever you throw at it,
and deliver non-stop productivity"

MAIN MISSIONS



CONSTRUCTION

CONSTRUCTION MATERIAL TRANSPORT

- Tipper
- Liquid transport

ON SITE JOBS

- Crane
- Service trucks



BEST WITH...

- Eurocargo Short Cab Low Roof
- 4x2 Hub Reduction
- 240 HP
- Large "C" section chassis
- 12 t payload

SPECIALTIES

- Defense
- Airport service truck
- Fire fighting
- Armoured Truck
- Telecommunication Mobile Units
- Camper
- Animal Transport
- Airport Catering Services



BEST WITH...

- Eurocargo Short Cab Low Roof
or Crew Cab
- 4x4
- 240 HP
- Large "C" section chassis
- 9 t payload

CONVERSIONS

Eurocargo is a first choice for every type of conversion, for a variety of customers - first among them **public sector** agencies and **municipal service** contractors, thanks to its special features:

- parallel rail **chassis frame** in high-yield-strength steel, **free from obstructions on top**
- possible **body lengths** ranging from 4,265 up to 9,000 mm
- equidistant **holes drilled in the rails** save time and cost when fitting superstructures and machinery
- **anti-corrosion** treatment of the frame without compromise
- various electro-actuated **power take-offs** with maximum torque delivery of up to 900 Nm.



E U R O C A R G O



- Popular conversions:
- lift platforms, high-access platforms
 - fire and rescue conversions
 - compact concrete mixers
 - sweepers for refuse collection, cleaning and maintenance services
 - airport truck services
 - high load capacity applications thanks to 3 axle conversion (up to 26 tons GVW)
 - crew and passengers transport (up to 7 seats)



DESIGNED FOR THE MOST DEMANDING OFF-ROAD WORK

E U R O C A R G O 4 X 4



- steel bumpers
- retractable access steps
- specially designed radiator guard
- double-reduction rear axle
- single or twin wheels
- steering angle from 40° to 48°, good for urban construction sites.

| ENGINES | WHEELBASES | CABS |
|---|--------------------------------------|-------------------------|
| ■ Tector 6 ■ From 220 to 280 HP ■ 6 cylinders ■ 5.9 lt | ■ 4, ranging from 3240 up to 4150 mm | ■ MLC ■ MLL Low Roof |



A REAL TRUCK, IN A COMPACT SIZE

The New DAILY is the **toughest of all light commercial vehicles**, with the most lasting performance, superb **balance on the road**, extremely **easy drive** and the **best load volumes** in its class.

FOR THOSE WHO GO FOR
DYNAMIC:
DAILY



2000

DAILY
VAN OF THE YEAR



2015

DAILY
VAN OF THE YEAR



The New DAILY is **not a car-derived vehicle, but a real truck:**

- **chassis** in special steel, thicker for greater load capacities
- **industrial derived engines**, optimized for heavy-duty performance
- **rear drive**, which guarantees traction and pickup at engine start
- **single or twin wheels**
- two distinct architectures, with different wheelbases for vans and chassis cabs.



ALSO AVAILABLE WITH CNG FUEL

NATURAL POWER

LIGHT - UP TO 7 TON

DELIVERY/ HAULAGE

URBAN

- Multi-drop distribution
- Food&beverage
- Controlled temperature
- Goods transport/general haulage
- Liquid transport

EUROPE >

More than 1 000 New Daily for Tesco
Mission: delivery/distribution

GERMANY & UK >

244 New Daily for UPS
Mission: delivery/distribution



BEST WITH...

- Daily Van or Cab 7 t
- 4x2
- 150 HP
- Large "C" section chassis
- 4,7 t payload

DAILY

CONSTRUCTION

CONSTRUCTION MATERIAL TRANSPORT

- Tipper
- Liquid transport

ON SITE JOBS

- Crane



BEST WITH...

- Daily Cab or Crew Cab
- 4x2 or 4x4
- 150 HP
- Large "C" section chassis
- 4,7 t payload

LIGHT ON ROAD, OFF-ROAD & PASSENGERS | DAILY & POWER DAILY

MUNICIPALITY & SERVICES

- Police services
- Road maintenance (sweeper)
- Garbage collector
- Aerial lift
- Recovery transport
- Sewage/waste
- Airport service truck

LIBYA >

100 New Daily for municipality tender
Mission: refuse collection



IRAQ >

1 275 New Daily for Iraq Ministry of Electricity Mission: maintenance of the country's electricity distribution network.



BEST WITH...

- Daily Cab or Van 5 t
- 4x2
- 150 HP
- Large "C" section chassis
- 3 t payload

MAIN MISSIONS

SPECIALTIES

- Rental
- Ambulance
- Fire fighting
- Special Transport
- Defense

EUROPE >

1 500 New Daily for Europcar
Mission: rental



BEST WITH...

- Daily Van or Cab
- 4x2, 4x4
- 150 HP
- Large "C" section chassis
- 3 t payload

ULTIMATE VERSATILITY

- Has no equal in its class:
- gross vehicle weights up to 7.2 t
 - payloads up to 4855 kg.
 - single cab, crew cab, chassis cowl, vans, semiwindowed vans, minibuses
 - 3 roof heights for van from 1545 to 2100 mm
 - max vehicle lengths up to 8300 mm



| ENGINES | WHEELBASES | CABS |
|---|--|---|
| <ul style="list-style-type: none">■ FIC■ From 136 (CNG) to 146 HP■ 4 cylinders■ 3.0 lt | <ul style="list-style-type: none">■ 8, ranging from 3000 up to 4750 mm | <ul style="list-style-type: none">■ Single cab■ Double cab■ Van |

DAILY



BODYBUILDERS

The New DAILY chassis cab is the most popular base among bodybuilders: it is the toughest and **the easiest to transform**. It can easily be equipped as a box van, tipper, panel van, camper, minibus, vehicle recovery truck, cranetruck, overhead platform and for many other special uses. Its strength means that no job is too big.



P O W E R D A I L Y

Structurally derived from IVECO trucks, POWER DAILY delivers power, safety, technology and versatility at a competitive price. It combines the advantages of rear wheel drive with outstanding strength, reliability and European quality. All of this, with high attention to detail, comfort, design and after sales assistance from Iveco's service dealer network.

“Engineered for reliable work in all conditions.”

TOUGH AND SMART

| ENGINES | WHEELBASES | CABS |
|---|--|--|
| <ul style="list-style-type: none">■ Sofim■ From 106 to 127 HP■ 4 cylinders■ 2.8 lt | <ul style="list-style-type: none">■ 3, ranging from 3300 up to 3950 mm | <ul style="list-style-type: none">■ Single cab■ Van |



ONGOING SYNERGIES WITH PUBLIC AND PRIVATE PARTNERS

Iveco Bus is the second manufacturer in the European public transport sector, actively working to improve its offer for public and private transport operators in all markets.

FOR THOSE WHO GO FOR
COLLECTIVE:

**BUSES
AND COACHES**

THE BEST COMBINATION OF QUALITY, COMFORT, STYLE AND COMPETITIVENESS

The core strengths of Iveco Bus are **Sustainability, Technology, Total Cost of Ownership** and **"High Value"**:

- Immediately recognizable modern and eye-catching lines
- Component rationalization to build different models starting from a common platform, with lower production costs and faster production times
- Components designed to be easily and quickly replaceable, in order to facilitate maintenance and reduce downtime.

Iveco Bus products come from factories located in Europe: Annonay (France), specialized in urban buses and tourism coaches, Vysoké Mýto (Czech Republic), the second largest European manufacturing plant for automotive and collective passenger transport vehicles, and Suzzara (Italy), major European factory for vans and minibuses. All the facilities operate to the high standards of World Class Manufacturing.



MINIBUS

POWER DAILY RELIABILITY, PERFORMANCE AND SAFETY. EVERYWHERE. Iveco Power Daily, featuring Euro II and Euro III engines, is the minibus dedicated to the extra-european markets.

DAILY MINIBUS

The perfect partner you can rely on, with its unfailing instinct for anticipating your business needs and providing the solution when you need it. Available in: E3 - E4 - E5 - E6 CNG.



2016

MAGELYS
COACH OF THE YEAR



COACH

MAGELYS

Your best partner for domestic and international lines, tourist transport, shuttle services and VIP club transfers. Available in Euro 6.



Vysoké Mýto

CITY

BRT (Bus Rapid Transit)

CREALIS

A true solution to transport issues in the city. Available in E6 - CNG - HYBRID



URBANWAY

The low-floor city bus designed for public transport in urban areas. Available in E6 - CNG - HYBRID



INTERCITY

CROSSWAY

The right choice for intercity and school transport. Available in E3 - E4 - E5 - E6. Pictured right: E6 model.



CHASSIS

LOW-FLOOR - EUROMIDI - DAILY CHASSIS





BEYOND THE ROAD

Machines to work hard with: robust, reliable and versatile trucks which are customized to meet specific client needs. Iveco Astra is a premium manufacturer of construction and mining equipment with 70 years' experience in the most demanding extra-heavy sectors.

FOR THOSE WHO GO FOR
EXTRA-STRONG:



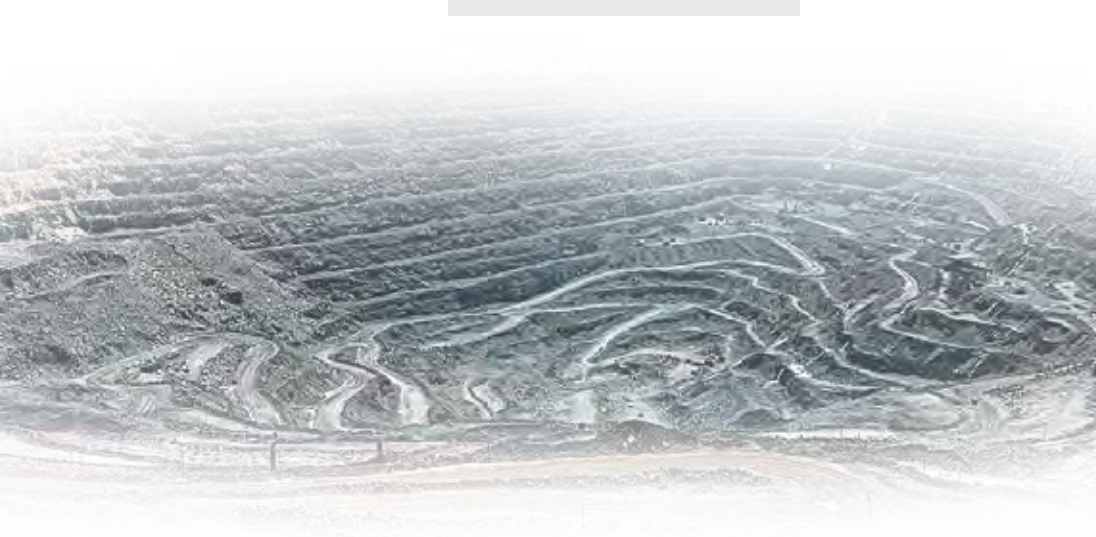
| HD9 RANGE | HHD9 RANGE | ADT RANGE | RD RANGE |
|--|--|---|---|
| <ul style="list-style-type: none">■ Up to 4 axles■ Up to 8×8■ Up to 560 HP■ Up to 300 t GCW | <ul style="list-style-type: none">■ Up to 4 axles■ Up to 8×8■ Up to 540 HP■ Up to 400 t GCW | <ul style="list-style-type: none">■ Up to 37 t payload■ Permanent 6×6■ Up to 456 HP | <ul style="list-style-type: none">■ Up to 50 t payload■ Up to 680 HP |
| <ul style="list-style-type: none">■ Gross vehicle weight: up to 63 ton■ Large chassis "C" section■ High tensile strength steel (530 MPa)■ Cast iron rear suspension shoulder with 120 mm pin■ "Power Ring": rear tandem closed by lower cross bar■ Oversized steering rods■ Wide engine heat exchanger surface■ Reinforced transfer box standard and extra heavy-duty type for engine power >500 HP and HHD■ Heavy duty components (i.e. oversized air filter; brass front suspension bushings) | <ul style="list-style-type: none">■ Articulation joint made of double spherical bearing■ Double-effect steering cylinders■ Rear suspension system with 2 hydraulic cylinders | <ul style="list-style-type: none">■ High-tensile steel chassis frame■ "A-frame" rear suspension■ "Power ring": ring-shaped central chassis frame■ Full automatic transmission with power and eco mode■ High-performance retardation | |



MINING AND QUARRY

A complete range for stripping, extraction, transportation and reclamation, carrying heavy loads of mineral ore and waste rock in extreme conditions.

“Our mission is to go farther and deeper.”



BEST WITH...

- Astra HD9/HHD9
- All Wheel Drive
- 480 HP
- Large “C” section chassis
- Reinforced axles
- Automatic/automated gearboxes
- Special tyres
- GVW up to 63 ton

HEAVY CONSTRUCTION

Astra machines support construction works from site preparation to earth removal, from material handling to mud (or snow) sweeping, in the most remote and hard-to-work places of the world.

“Dams, roads, bridges, power generation plants... no matter where, we’ll be there”

BEST WITH...

- Astra HD9
- 6x4, 8x4, 8x6
- 420-480 HP
- Simple mechanical and electronic architecture
- Easy to set up



MAIN MISSIONS



Converted by Astra

HEAVY HAULAGE

Turbines, boilers, bridge beams and such are huge, heavy and indivisible. Astra vehicles for heavy haulage are designed and manufactured to perform well (and last) in the category up to **400 t**.

“Some loads are too heavy, or too big, to be transported on a standard truck.”



BEST WITH...

- Astra HD9/HHD9
- Up to 560 HP
- Large “C” section chassis
- Extra reinforced axles
- Torque converter gearboxes
- GCW up to 400 ton

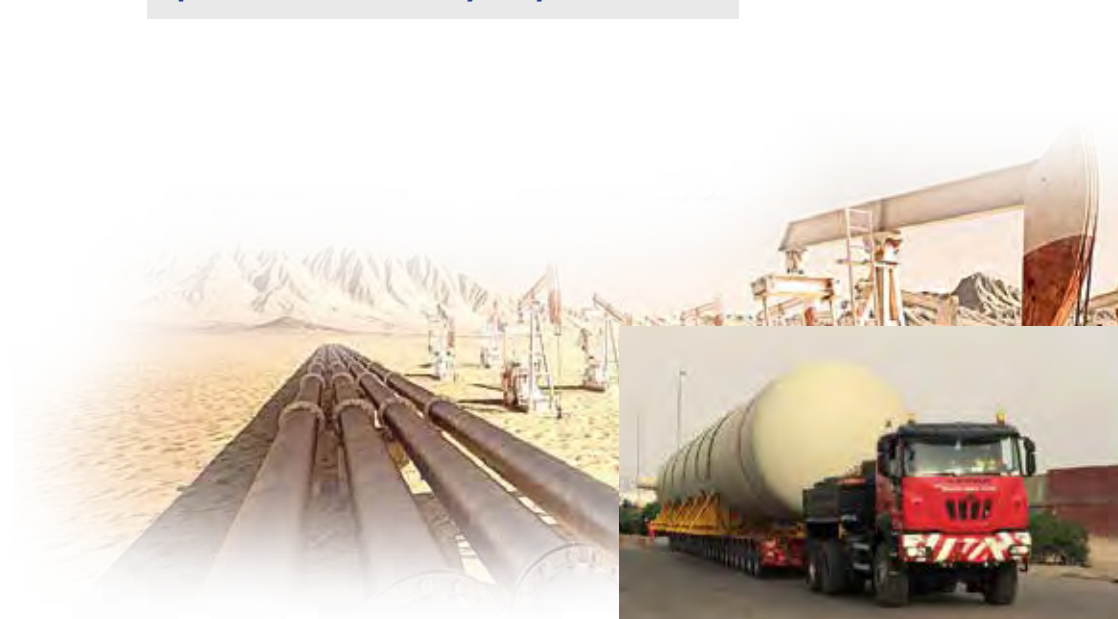


Converted by Astra

OIL AND GAS

Designed to travel and operate in the most unfavorable weather; driving the worst off-road tracks.

“One of the most difficult jobs on the planet, and this is why they call us.”



BEST WITH...

- Astra HD9/HHD9
- All Wheel Drive
- Up to 560 HP
- Large “C” section chassis
- Extra reinforced axles
- Special high flotation tyres
- Extra long wheelbases
- GVW up to 63 ton

FIRE FIGHTING

Fire fighting vehicles are highly customized. Their high-torque and high-power engines provide excellent on-road and off-road mobility and high speed to attend emergencies.



BEST WITH...

- Astra HD9
- All Wheel Drive
- Up to 560 HP
- Large "C" section chassis
- Extra reinforced axles
- Automatic gearbox

LOGGING

Forestry maintenance and timber transportation find their ideal machines in the Astra ADT 30, and total traction HD9 and HHD9. A wide range of optionals include winter kits and intarder to improve braking performance when traveling downhill fully loaded.

BEST WITH...

- Astra HD9
- All wheel drive
- Up to 560 HP
- Large "C" section chassis
- Long wheelbases, special tyres



If you need a vehicle never seen before, Astra can produce it for you: all our vehicles are built around a double "C" rail straight side member structure, to guarantee robustness and make transformations easier.

VOCATIONAL



BEST WITH...

- Astra HD9/HHD9
- 6x6
- Up to 560 HP
- Large "C" section chassis
- High flotation tyres
- Automatic gearboxes

LANDFILL SITES

Landfill jobs require large wheels and high ground clearance for excavation, waste disposal and reclamation.

ADT dump trucks also provide 360-degree oscillation of the rear frame and 45-degree turning angles left and right.



DEFENSE

Astra vehicles are mainly used for logistic missions and are a benchmark in stability, reliability and safety, also in emergency situations.

A high level of customization is available and all components conform to military standards.



BEST WITH...

- Astra HD9
- All Wheel Drive tractors
- Up to 560 HP
- Large "C" section chassis
- Torque converter gearboxes
- GCW: up to 400 ton



CNH INDUSTRIAL GLOBAL LEADER IN THE CAPITAL GOODS SECTOR

Through its various businesses, CNH Industrial designs, produces and sells agricultural and construction equipment, trucks, commercial vehicles, buses and specialty vehicles, in addition to a broad portfolio of powertrain applications. Present in all major markets worldwide, CNH Industrial is focused on expanding its presence in high-growth markets, directly or through joint ventures.

MACHINES FOR WORK



TRUCKS



BUSES AND COACHES



FIREFIGHTING



CIVIL PROTECTION
AND DEFENCE VEHICLES



SKID STEER LOADERS



CRAWLER EXCAVATORS



ENGINES AND TRANSMISSIONS



TRACTORS



COMBINES

BIG, STRONG AND FLEXIBLE

The Group has the flexibility to pursue the **most advantageous strategic options** and capitalize on opportunities for growth and consolidation, consistent with our ambitions for it to become a leader in the sector.

KEY FIGURES [31 DEC 2015]



12

BRANDS

50

R&D CENTERS

64

MANUFACTURING PLANTS

180

NATIONAL MARKETS

64,391

EMPLOYEES

5,968

INDIVIDUALS DEDICATED TO INNOVATION

7,719

ACTIVE PATENTS OWNED

\$ 856

MILLIONS INVESTED IN R&D

\$ 4.5

MILLIONS INVESTED IN TRAINING

\$ 248

MILLION NET INCOME

\$ 25.912

BILLION REVENUES

\$ 9.3

BILLION TOTAL AVAILABLE LIQUIDITY



IVECO, YOUR BUSINESS PARTNER

40 YEARS OF EXCELLENCE,
MORE THAN 150 YEARS OF EXPERIENCE



CONRAD
MAGIRUS





GIOVANNI
AGNELLI





VINCENZO
LANCIA





GEORGES
RICHARD






GIOVANNI
SILVESTRI



EUROPEAN TECHNOLOGY WITH WORLDWIDE RECOGNITION



EUROCARGO
1992


EUROTECH
1993

STRALIS
2003

STRALIS HI-WAY
2013

MAGELYS
2016

EUROCARGO
2016



DAILY
2000

DAILY
2015



A GLOBAL MANUFACTURER

| EMPLOYEES | PRODUCTION SITES | SERVICE OUTLETS | R&D CENTERS |
|------------------|---|-----------------------|-------------------|
| 26,000 worldwide | 17 in 14 countries throughout Europe, Asia, Africa, Oceania and Latin America | in over 160 countries | 16 in 7 countries |



Committed to safe, efficient and sustainable mobility, Iveco works to develop technological solutions that respect both people and the environment. Iveco has been investing in the development of alternative drive systems for over 30 years. It offers EEV (Enhanced Environmentally Friendly Vehicle) engines running on Diesel or compressed natural gas on its entire range.



INNOVATION

Iveco's vision is to develop modes of transportation that reach their destination in the most efficient, ecological and safe way. The company places an emphasis on its innovation practices in order to continuously improve and enhance its technologies. Innovation follows the guiding principles of **Sustainability** and **Customer Obsession**.

SUSTAINABILITY

Iveco's commitment to sustainability evident in the various areas of the brand's activities, from the promotion of increasingly sustainable mobility to the reduction of the environmental impact of its production processes; from the management and development of human resources to quality of life in the workplace; from initiatives involving the sales network to those benefitting local communities. Progress towards the achievement of these objectives is constantly measured and observed through the use of specific performance indicators.

"CUSTOMER OBSESSION"

It is the approach adopted by Iveco in its research and development processes in order to develop what customers will require in the future from a vehicle.

IVECO CAPITAL

TAILOR MADE FINANCIAL SERVICES

Iveco Capital is the captive financial services brand of IVECO and offers a full range of financing, leasing, rental and ancillary services for buses, trucks & commercial vehicles. Extended warranty, maintenance and repair services, and various types of insurance can be included in the package*.

All financial packages can be tailored to the customers' needs and apply to all types of vehicles -new or used, and conversions.

SPECIALIST KNOWLEDGE AND EXPERTISE

For over 20 years Iveco Capital has been supporting the sales of Iveco products, financing the complete range of light, medium and heavy commercial vehicles. Iveco Capital provides customers professional advice to select the financial product that is the best match for their business's financial and fiscal requirements. With an over 20 years' experience, we have been helping customers through various wholly owned subsidiaries, joint ventures and vendor programs throughout Europe Middle-East and Africa.

A TRULY GLOBAL PARTNER

Iveco Capital operates in 14 countries and provides support to Iveco customers in all of the main European, Africa and Middle-East markets. To date Iveco Capital has served more than 55,000 customers, ranging from owner-operators through to multi-national blue-chip companies.

**Subject to credit approval. Offerings and products may vary by country depending on the local fiscal and accounting regulations.*



AFRICA AND THE MIDDLE EAST

Examples of very successful programs:

- In **Maghreb**, IVECO CAPITAL benefits from a solid exclusive cooperation on Financial Lease offerings with our Company's European historical banking partner; BNP Paribas Group;
- In **South-Africa**, IVECO CAPITAL relies on WesBank to manage the financial services offering via a long lasting successful vendor program with our Company.
- In the **Middle-East**, IVECO CAPITAL leverages the Company's recent partnership agreements and vendor programs:
 - Emirates Money in the United Arab Emirates,
 - Saudi Fransi Leasing in the Kingdom of Saudi Arabia;additional vendors and collaboration agreements are in development in Qatar, Oman and Kuwait; please ask us for more details.

AFTER SALES THE IVECO SERVICE & PARTS SYSTEM



A WORKING MAN'S BEST FRIEND

Product quality is obviously the key factor. But we want Iveco drivers to feel they are always protected by a trusted partner, especially across vast and demanding regions. With its integrated service and parts system, Iveco is a working man's best friend.

- Constant attention to reducing vehicle downtime.
- Advanced communication systems link dealer and head office: every requirement for technical support is known by Iveco in real time.
- Every extended machinery downtime is entered into the system in real time and the relevant department is immediately alerted automatically.
- All technical malfunctions and quality issues are recorded and automatically sent to the relevant Quality team, and a thorough analysis begins soon after.



"You ask for a vehicle and we also give you a system that supports and accompanies it from the first day to the last".

ACCESSORIES LINE

CUSTOMIZE THE VEHICLE INCREASING ITS VALUE

Iveco has created a complete line of accessories, specially tailored to your vehicle, your mission and your tastes. You can personalise your vehicle, making it even safer, more technologically advanced and more comfortable.

PERSONALITY AND PERFORMANCE

A vast range of external accessories allows you to personalise your vehicle, improving performance and reducing fuel consumption, thanks to the combination of technology and design that guarantees maximum efficiency.

ELEGANCE AND PRESTIGE

These are the characteristics of the internal accessories, designed to equip your vehicle to create a unique and personalised environment. The wide range of products on offer will make even the longest journeys and the most challenging missions more enjoyable.



GENUINE PARTS

WHY CHOOSE IVECO GENUINE PARTS?

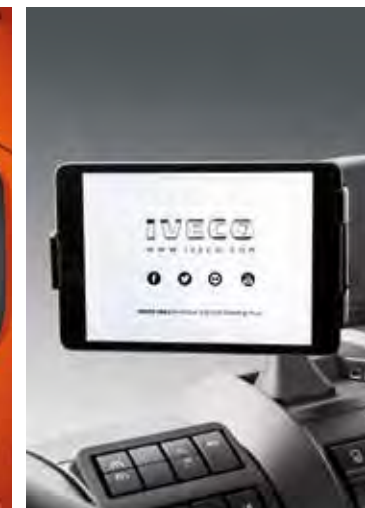
An efficient braking system, maximum road holding, good visibility both day and night, effective filtration of air and fluids - all of these elements are essential to maintaining the value of your Iveco vehicle over time, protecting you from unplanned downtime, ensuring safety for people and goods. Iveco Genuine Parts, combined with the professional skills of Iveco technicians, are your greatest allies in maintaining the productivity of your business.

"A workshop close by, that really understands my truck and always keeps it in good working order for me. It must also have all the parts to hand."



E.A.S.Y. DIAGNOSTIC PLATFORM

To identify any problems quickly and reliably, and to enable the workshop to solve problems efficiently, Iveco has created a **diagnostic platform** that reflects the evolution in the product. It is called **E.A.S.Y.** (Electronic Advanced System), and enables the simple **diagnosis of the various electronic control units on the vehicle**, using a communications module (ECI) and a specific personal computer. The software for the E.A.S.Y. platform provides a single, intuitive interface, through which it is possible to consult a guide to repairs indexed by symptom. **The ECI module ensures communication with all current and future Iveco control units.** Thanks also to interaction with Teleservices and all other Iveco support systems to which this system can connect immediately, E.A.S.Y. is at the heart of **Iveco Advanced Diagnosis**, representing the access key to the workshop of the future.



SAFETY IS EVERYTHING

For this reason, the SAFETY line of accessories offers all the solutions you need to face unpredictable events with total peace of mind. A welcome helping hand for your business.

A WAY OF LIFE

The COMFORT line of accessories can make your rest time more of a pleasure. Because being in the cab doesn't just mean being behind the wheel. Caring about details.

ALWAYS AT THE CUTTING EDGE

The HI-TECH line of accessories allows you to benefit from the latest in technology and infotainment. A variety of opportunities, with a single purpose: simplifying your work.

ASK TOM

Our Iveco experienced master mechanic ready to answer all of your questions and curiosities. Useful information on the technical features and correct behaviour of replacement parts, recommendations on how and when to service your vehicle, precious tips to prevent breakdowns and unexpected downtime.



Follow Tom on www.iveco.com

IVECO WORKSHOPS

Well-equipped and run by highly qualified staff, they are available for Iveco customers for maintenance, repairs and spare parts. Many have mobile workshops that can reach a vehicle in trouble practically anywhere.

THE BEST WARRANTY ON THE MARKET

In some countries it can reach up to 2 years or 200,000 km. Many competitors only offer 1 year while others do not exceed 6 months.

FULL OFFERING ALSO IN PRE-OWNED VEHICLES



RELIABILITY THROUGH TIME

OK TRUCKS is the brand dedicated to sales and marketing of pre-owned vehicles certified by Iveco. It offers a broad range of vehicles to customers interested in a second-hand vehicle that is safe, reliable, guaranteed and certified by Iveco.

OK TRUCKS

PRE-OWNED VEHICLES CERTIFIED BY **IVECO**

Our vehicles undergo to a battery of checks and inspections and we divide them into three categories:

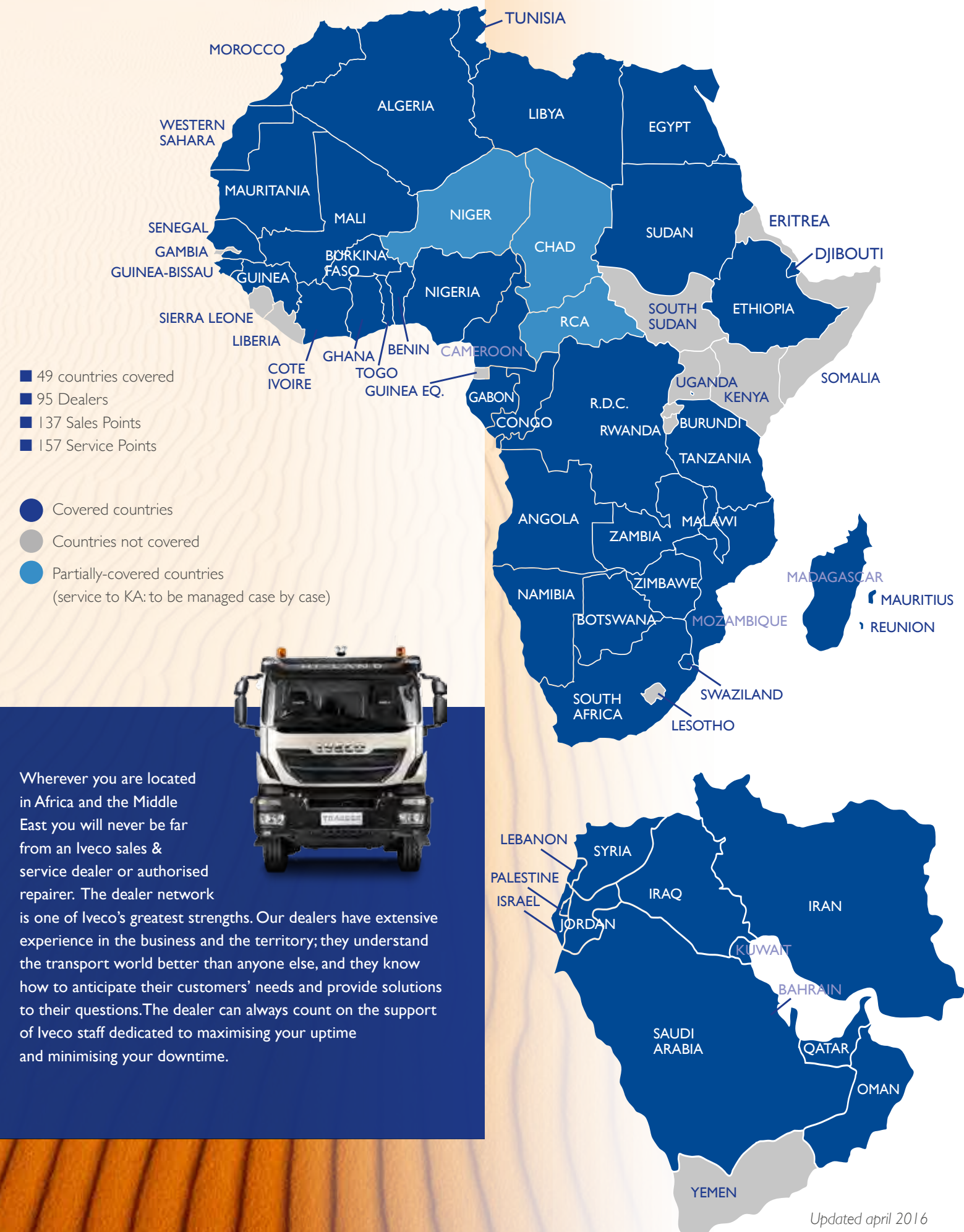
- **Premium** - Excellence guaranteed. Low mileage and age (max. 4 years old), tyre tread at least 6 mm, legal and technical inspections carried out and fully refurbished, documentation available and in order; Manufacturer Warranty
- **Comfort** - Technical top..Max. 6 years old, tyre tread at least 3mm, legal and technical inspections carried out, documentation available and in order; Manufacturer Warranty (if applicable)
- **Basic** - The advantageous alternative. Exterior and interior cleaned, documentation available and in order; technical inspection carried out, roadworthy.

See more in www.oktrucks.com

Visit our OKTRUCKS Sale Point in South Africa.



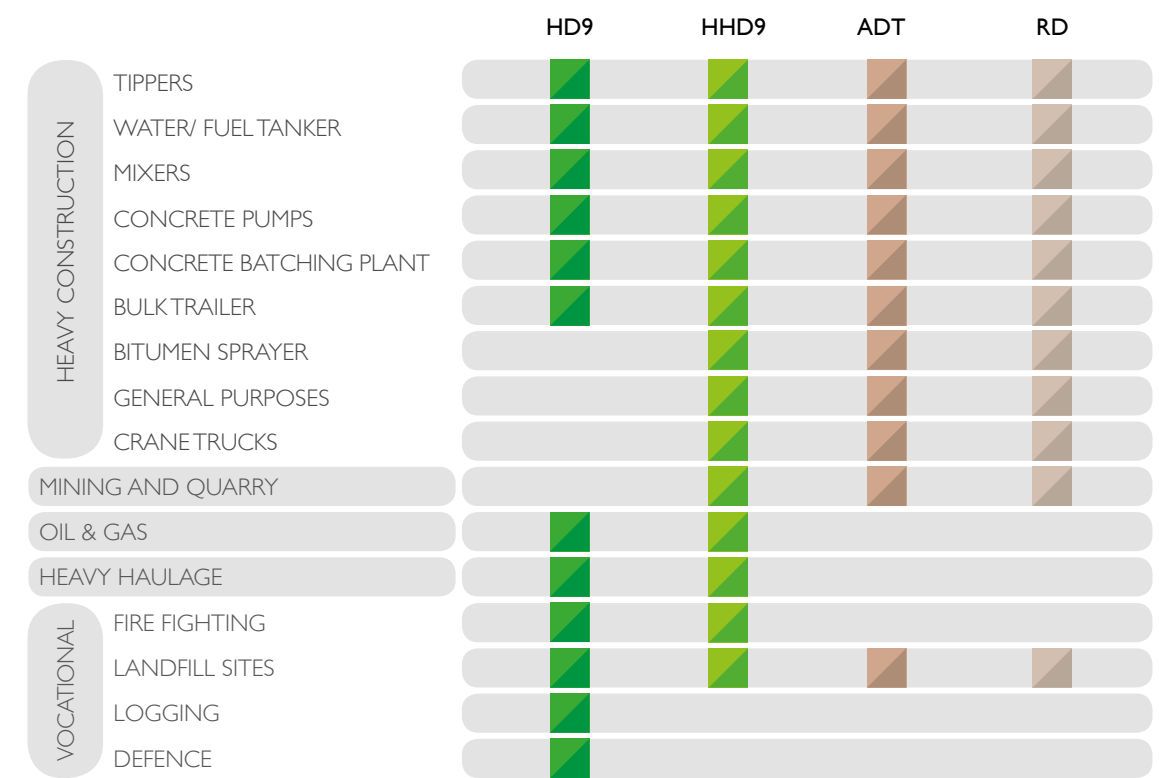
IVECO AFRICA AND MIDDLE EAST COVERAGE



GOODS



PASSENGERS



Find us on: www.iveco.com/africa-mideast-en/Pages/HomePage.aspx

Contact us: www.iveco.com/africa-mideast-en

Printed: 2016

Editorial project, graphic design and copywriting: Stratta&Associati

FOR
THOSE
WHO
GO



IVECO

Your partner for sustainable transport