

IVECO

Drive the road of change



Accessories Catalogue.

DAILY



04
Versatility.

14
Profitability.

20
Safety.

32
Hi-Tech & Connectivity.

46
Comfort.

New DAILY.

Drive smarter.

The Daily strides ahead once again in its evolution, with new adaptive and intelligent solutions that take collaborative interaction to a new level, to become your true companion in business success.

The Daily continues to make advances in Connectivity with a constantly expanding array of highly personalised services precisely tailored to your use of the vehicle and your requirements.

True to its heritage, it leverages technology to constantly adapt to you and the conditions of your mission, raising your living and driving experience to the highest levels in the industry.

Thanks to IVECO Accessories, you can make your working and driving experience even more exciting and unique, through a full line of products specifically designed for your vehicle. Integrate your mobile workstation with the most up-to-date technology thanks to the new Wi-Fi Apple and Android Car play System. Active and passive additional safety systems help you to better protect your Daily: a tailor-made Presence Detection System allows you to perceive whether the presence of an obstacle is in the blind spot. A completely new and revolutionary system of wiper blades and LED rear lights will increase safety and profitability during everyday activity.

Complete your vehicle dressing up externally and internally, choosing from a wide range of luggage racks and the most suitable mats and new seat covers for your activity.

Versatility.







Fitting your mission.

Luggage rack.

There are a **wide range of luggage rack options** covering each configuration type and wheel base. It is made from a **lightweight aluminium structure** that is **totally corrosion-proof**, easy to repair in case of damage and maintenance-free. It can be **easily installed** on the existing fixing points and without having to perforate the bodywork. Roof-top anchoring distributes the load in an even and safe manner. **Two versions are available; standard and long**, to satisfy all needs.

PN	Description
500050810	Standard Luggage Rack (2,600x1,700mm) 3,000 Wheelbase.
500050811	Long Luggage Rack (3,000x1,700mm) 3,000 Wheelbase.
500050812	Standard Luggage Rack (2,600x1,700mm) 3,520 Wheelbase, H1.
500050813	Long Luggage Rack (3,200x1,700mm) 3,520 Wheelbase, H1.
500050814	Standard Luggage Rack (2,800x1,500mm) 3,520 Wheelbase, H2.
500050815	Long Luggage Rack (3,200x1,500mm) 3,520 Wheelbase, H2.
500050816	Standard Luggage Rack (2,800x1,500mm) 3,520L Wheelbase, H2.
500050817	Long Luggage Rack (3,500x1,500mm) 3,520L Wheelbase, H2.
500050818	Standard Luggage Rack (2,800x1,500mm) 4,100 Wheelbase, H2.
500050819	Long Luggage Rack (4,500x1,500mm) 4,100 Wheelbase, H2.
500050820	Standard Luggage Rack (3,200x1,500mm) 4,100L Wheelbase, H2.
500050821	Long Luggage Rack (4,500x1,500mm) 4,100L Wheelbase, H2.



Fitting your mission.

- 1 Tube holder.
- 2 Ladder.
- 3 Floor platform.
- 4 Beacon holder.

	PN	Description
1	500050822	Tube/Conduit Holder 3 Metres.
	500050823	Tube/Conduit Holder 4 Metres.
2	500050824	Ladder Height H1.
	500050825	Ladder Height H2.
	500050826	Floor Platform 2,600.
	500050827	Floor Platform 2,800.
3	500050828	Floor Platform 3,000.
	500050829	Floor Platform 3,200.
	500050830	Floor Platform 3,500.
4	500050831	Beacon Holder.



Fitting your mission.

Roof racks.

Aluminium racks that are **reliable and easy to install.**

PN	Description
500050832	Roof Rack Set 1,700 H1.
500050833	Roof Rack Set 1,500 H2.
500050834	Additional Bar H1 1,700.
500050835	Additional Bar H2 1,500.



Load space trim.

The load space trim has been **custom-designed for the Daily**. The **flooring can be easily removed**, yet remains firmly in place. The panels provide the vehicle with the best possible protection as they are **extremely resistant to humidity, chemical agents and scratches**. The flooring is manufactured from 12mm phenolic laminate and the side panels are manufactured from 4mm propylene with an internal honeycomb structure.

PN	Description
500050836	Flooring kit 3,000 Wheelbase Single Wheel.
500050837	Flooring kit 3,520 Wheelbase Single Wheel.
500050838	Flooring kit 3,520L Wheelbase Single Wheel.
500050839	Flooring kit 4,100 Wheelbase Single Wheel.
500050840	Flooring kit 4,100L Wheelbase Single Wheel.
500051000	Flooring kit 3,520 Wheelbase Double Wheel.
500051001	Flooring kit 3,520L Wheelbase Double Wheel.
1 500051002	Flooring kit 4,100 Wheelbase Double Wheel.
500051003	Flooring kit 4,100L Wheelbase Double Wheel.
500050841	Panel kit 3,000 Wheelbase, H1.
500050842	Panel kit 3,520 Wheelbase, H1.
500050843	Panel kit 3,520 Wheelbase, H2, H3.
500050844	Panel kit 3,520L Wheelbase, H2, H3.
500050845	Panel kit 4,100 Wheelbase, H2, H3.
500050846	Panel kit 4,100L Wheelbase, H2, H3.



Profitability.

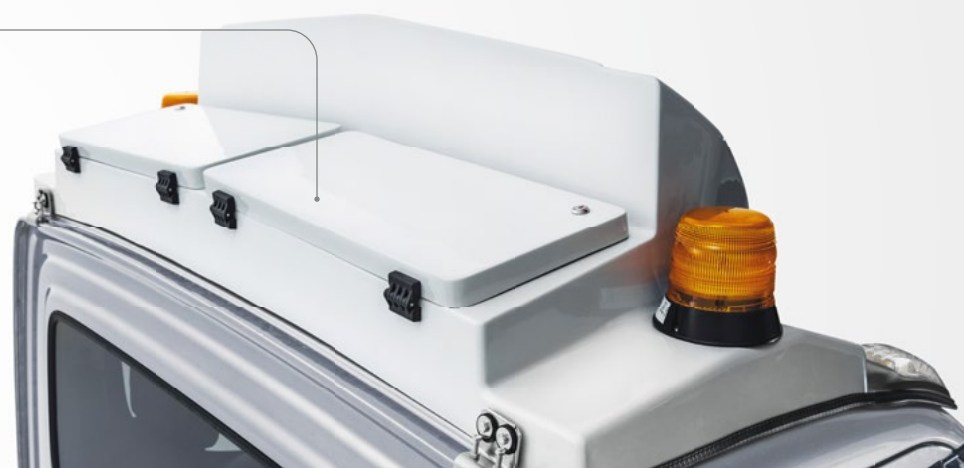




1

3

4



To maximise the efficiency.

Air flow system.

The original airflow system consists in a wide offer of spoilers and a specific aerodynamic kit designed for the fixed sport line spoiler. All roof spoilers guarantee an **excellent aerodynamic solution** to **reduce fuel consumption** and come in both fixed and adjustable versions. A **solid** but **lightweight** design comes into play thanks to the use of structural webbing and internal ribs coupled with resin. The inserts are treated to give **excellent mechanical strength**, thanks to the use of structural frames made from **corrosion-resistant materials** and installation is fast and simple. The aerodynamic kit is tested in the wind tunnel and on road to ensure enhanced fuel savings.

	PN	Description
1	500050771	Fixed Roof Spoiler Sport Line*.
	500051757	Aerodynamic kit - compatible with Fixed Roof Spoiler Sport Line*.
2	500050772	Adjustable Roof Spoiler Sport Line.
3	500050770	Adjustable Roof Spoiler Standard Line.
4	500051130	Fixed Spoiler Business Version with Boxes.

* Standard colour: white.



To maximise the efficiency.

1 Sunvisor. The sun visor **reduces the effect of the sun rays** and help **prevent ice forming** on the glass in the winter while keeps the cab cooler in hot temperature.

- Material: Plexiglass

- Thickness: 6mm

2 Wiper Clean Vision. Distributing washer fluid on the windshield all along the blade through its structure.

3 Deflectors. Made in methacrylate, the deflectors **reduce the aerodynamic resistance and turbulence without affecting visibility.**

4 LED ambient interior strip kit. These LED strips are perfect to illuminate the usually dimly lit cargo area, by easily connecting them to the original ceiling light. They also ideal in applications inside motorhomes and/or caravans.

PN	Description
1 500051520	Sunvisor*.
500051657	Wiper Clean Vision.
2 500051658	Kit Clean Vision.
500051521	Deflectors.
3 500051521	Deflectors.
500051656	LED ambient interior strip kit.
4 500051656	LED ambient interior strip kit.

* Not to be mounted when the following OPT are installed: 14522 ACC (Adaptive Cruise Control), 72803 ACC+Queue Assist, 2912 LDWS (Lane Departure Warning System), 72805 LDWS + Proactive Lane Keeping Assist, 72806 AEBS (Advanced Emergency Braking System) + CITY BRAKE, 72841 Automatic wipers and headlights, 72839 AHBC (Automatic High Beam Control).

Safety.







Wherever safe.

1 Pushbar. The New Pushbar, granted EU certification, provides **front protection** and is able to **increase both active and passive protection** of the **vehicle** and **pedestrians**.

2 Side illuminated bars. LED illuminated sidesteps (aluminium provided with anti slip rubbers).

3 Side protection bars. The side protection bars, **made of stainless steel prevent damage to the side of the vehicle and chassis**. The doors can still be opened even after lateral impact.

4 Lightbar. The lightbar equipped with the additional lights has been **developed to increase the safety of the vehicle** allowing a **perfect vision of the road** at long distance.

PN	Description
1 500050848	Pushbar.
500051659	Kit for 3,000 Wheelbase.
2 500051670	Kit for 3,520 Wheelbase.
500051671	Kit for 4,100 Wheelbase.
500051892	Kit for 3,000 Wheelbase AdBlue vehicle.
500051893	Kit for 3,520 Wheelbase AdBlue vehicle.
500051894	Kit for 4,100 Wheelbase AdBlue vehicle.
3 500050855	Additional kit for Overhang - 3,520L.
500050856	Additional kit for Overhang - 4,100.
500050857	Additional kit for Overhang - 4,100L.
500051470	Lightbar.
4 500050665	FULL LED additional light, 565lm, with 5" diameter, black cover/chromed surround.
500050661	FULL LED additional light, 700lm, with 7" diameter, black cover/chromed surround.



Wherever safe.

1 Rear light grille. The rear grille protects the light from stones and accidental knocks, without impacting visibility and safety.

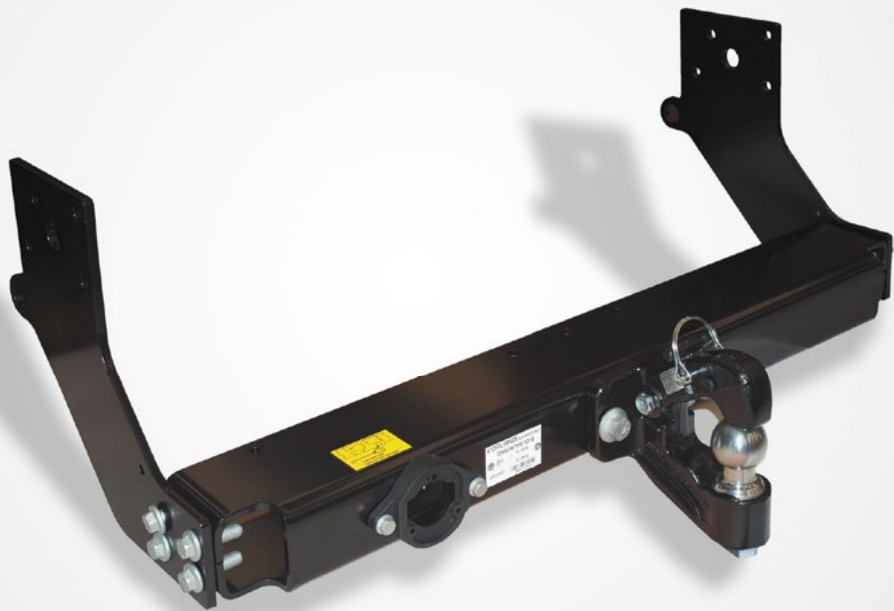
2 LED rear light. The LED rear light greatly improves your vehicle's visibility and safety in all conditions, whilst requiring much less energy than standard lights.

3 Safelock. In order to **enhance the safety of the load space trim**, IVECO Accessories proposes an **innovative lightweight lock system**:

- Extremely safe thanks to its **anti-drilling cylinder** and antipicking
- Quick and **easy to install**
- Unassailable, thanks to the round shape that offers **no handholds or lever**

4 Single-Piston Diablock. Diablock® is an electromagnetic actuator shielding door which protects the load space trim.

	PN	Description
1	500051655	Rear light grille.
	500051654	Plate required for first assembly.
2	500051673	Right-hand LED headlight.
	500051674	Left-hand LED headlight.
3	500051472	Safelock.
4	2994944	Single-Piston Diablock®.



1



2



3



4

1 Tow hook. The IVECO tow hooks are the same as those used in OEM applications. They are type-tested and approved, respecting the same safety standards. In the range we offer Spherical, Automatic and Mixed hooks. Check with the dealer the right one for your vehicle according to type, version, wheelbase and OPT.

2 Fuel caps & anti-theft system. Tested by IVECO for the New Daily, the fuel anti-theft systems provide the following advantages:

- **Prevents fuel theft**
- **Quick refuelling** at 120l/min
- **Easy and fast installation**

3 Emergency and first aid kit.

Kit includes:

- Black clutch bag with IVECO screen printing
- Hi-vis vest
- Compact Euro micro triangle
- Torch with 19 white high-brightness LEDs, with non-slip grip and 3 batteries included
- First aid kit certified DIN13164
- Bulb and fuse set

4 Fire prevention. Manual flame inhibitor. Aerosol flame inhibitor, compact and easy to use. Battery operated, with an LED signalling the state of charge.

- Dimensions: diameter 3cm length 34cm
- Total weight: 250g
- Fire class: A,B,C
- Electric activation
- 1.5V alkaline battery
- International patent

PN	Description
2 500051030	Fuel Anti-Theft System.
2993927	Fuel cap with key.
3 500050777	Emergency and First Aid Kit.
4 500050745	Eolo - Fire Prevention.



1



2



3



3



3



Wherever safe.

1 Vodafone Automotive Volumetric Alarm.

The system protects the engine compartment, cab and storage compartment.

General characteristics:

- Central locking
- Built-in volumetric ultrasound sensors
- GSM alarm with engine lock-up
- SMS transmission with up to 10 numbers in case of alarm
- Mobile alert call
- Perimeter protection
- Ignition lock-up protection
- Indicators flash with alarm engage/disengage
- Self-powered wireless siren

2 Tyre repair and inflation system.

Kit includes:

- 15Amp compressor able to inflate tyres to high pressures quickly
- 8m long electric cables with calliper connectors for direct battery pole connection
- 620ml bottle of sealant fluid, able to repair holes caused by objects of up to 8mm in diameter on tubeless tyres

The special kit configuration does not require valve disassembly.

3 Tool boxes.

Perfect for outfitting any type of vehicle thanks to the wide range of accessories and customisations available.

PN	Description
1 500051515	Vodafone Automotive Volumetric Alarm.
500050780	Tyre Repair and Inflation System.
2 500051881	Refill bottle for PN 500050780.
500050200	Matt Stainless Steel Case 500x350x400mm (5000505215 Brackets).
3 500050577	Thermoplastic Case 400x350x400mm (500050581 Brackets, 500050590 Pistons).
500050210	Rear Cab Wall Storage Box in White painted Stainless Steel / 500x1200x1870mm.



1 Radar Blind Spot Detection System. Blind Spot Detection (BSD) system warns drivers with an audible & visual warning if there are vehicles in adjacent lanes that the driver may not see. The alerts allow drivers to proceed with caution if they are planning changing lanes.

Characteristics:

- 79GHz Microwave radar technology
- No need drilling any holes
- Sensors are mounted inside the plastic bumper by 3M stickers
- With speed detection
- 120° wide detecting degree
- Indicator can be triggered when vehicle is in blind spot zone

2 Tyre pressure monitoring system.

The tyre pressure monitoring system keeps **always under control** the **temperature** and the **pressure** status of the tyres.

Two different versions are available:

TPMS Light Truck

The kit contains:

- 4 Valve-cap sensors
- 4 Dustproof cover
- 1 Display: L42*W88*H14mm

Characteristics:

- Pressure range: 0-5.2Bar / 0-75PSI
- Visual and audible warning
- Self testing for each power on
- Intelligent sleeping mode for power saving

TPMS compatible with A/V input*

The kit contains:

- 4 Valve-cap sensors
- 4 Dustproof cover
- 1 EDC Unit

Characteristics:

- Pressure range: 0-4.5Bar / 0-65PSI
- One-press button to on/off the system on the A/V monitor
- Visual and audible warning
- Self testing for each power on

* This TPMS is compatible with the multimedia system (PN 500051523, PN 500051524, PN 500051525, PN 500051638, PN 500051639, PN 500051640).

PN	Description
500051645	Radar Blind Spot, installation and cable kit for Daily CAB long version (included holder for rup installation).
1 500051646	Radar Blind Spot, installation and cable kit for Daily CAB short version (included holder for rup installation).
500051647	Radar Blind Spot, installation and cable kit for Daily VAN short version.
500051648	Radar Blind Spot, installation and cable kit for Daily VAN long version.
500051505	TPMS Light Truck.
2 500051506	TPMS compatible with A/V input.
500051507	Kit of 2 additional valve cap sensors.



Hi-Tech & Connectivity.





1



2



3



The future on board.

Professional Safety Systems.

The high quality reversing safety systems provide a greater range of vision when performing manoeuvres. Each product is designed to provide maximum reliability during standard and heavy-duty use. Three kits are available with TFT LCD colour monitors, together with either one or two waterproof cameras.

1 Complete rear vision kit. The kit contains all the accessories necessary for the installation, including the 15m video cable.

Technical specifications:

Extra Slim 7" monitor

- TFT/LCD 7" monitor
- 480x232 pixel resolution
- PAL/NTSC system - 16:9, 4:3 format
- Touch keys
- Image rotation 90°/180°/270°/360°
- Viewing angle 60° horizontal / 60° vertical
- Colour/contrast/brightness adjustment
- 1 audio input
- 2 video inputs
- IR transmitter for IR DUAL headphones
- Remote control included
- 12V power supply
- Dimensions: 17.8x11.8x2cm
- Automatic rear view camera activation

Rear view camera

- Brightness 0.5Lux
- CMD 1/4" sensor
- NTSC system
- Normal and Mirror image
- 280,000 pixel resolution
- 25fps frame rate
- 140° viewing angle
- IP67 waterproof
- 6m video cable
- 2x2.5cm dimensions
- 12V

2 Complete rear vision kit. The kit contains all the accessories necessary for the installation of the rear view camera, including the 20m video cable and a bracket with double-sided adhesive area for installing the monitor on the dashboard.

Technical specifications:

Extra Slim 7" monitor

- TFT/LCD 7" monitor
- 1080x480 pixel resolution
- PAL/NTSC system - 16:9 format
- Touch keys
- Image rotation 90°/180°/270°/360°
- Adjustable angle/tilt with bracket.
- Colour/contrast/brightness adjustment
- 1 audio input
- 2 video inputs
- IR transmitter for IR DUAL headphones
- 12V power supply
- Automatic rear view camera activation

Infrared rear view camera

- Manual/automatic activation
- Brightness 0.5Lux
- CDM 1/4" sensor
- NTSC system
- Mirror/Normal image
- 960x576 pixel resolution
- 25fps frame rate
- 130° viewing angle
- IP67 waterproof
- Dimensions 1.4x1.4cm
- 6m video cable
- 12V

3 Camera for NIS Daily CAB/VAN system. Camera kit plug & play for RVC display on OEM IVECO NIS Daily system.

PN	Description
1 500052042	Rear vision kit.
2 500052045	Rear vision kit.
500049942	NIS Daily CAB system.
3 500049943	NIS Daily VAN system (kit for integration in third stop Daily).



1



2



3



4

1 Portable navigation IVECO 7" Europa.

7" high resolution (800x480 pixels) touch screen, complete TomTom™ Europe map, includes Russia and Turkey.

- Size 188x114x12mm
- 2D/3D Visualisation
- Speed assistance and Autovelox alert
- Real View and lane assist
- Customisation with IVECO logo at start-up
- POI database dealers EU IVECO
- Automatic audio/video input for rear view camera.

1 Portable navigation IVECO 7" Truck Map full EU.

- 7" high-resolution touch screen
- Dimensions: 188x114x12mm
- TomTom Europe maps for 43 countries, including Russia and Turkey
- Bluetooth® Handsfree with simultaneous navigation and calls
- Customisation with IVECO logo at start-up
- POI database dealers EU IVECO
- Automatic audio/video input for rear view camera
- Audio output
- Integrated eco-traffic light system
- Dedicated truck software: by setting dimensions such as the weight of the vehicle and the type of material to be transported, it will calculate the best route possible, taking into consideration the width of roads, height of tunnels and bridge weight limits for heavy vehicles.

For both, package contains: vehicle battery charger, window mount, mini-USB cable, 2.5 audio video jack cable for rear view camera input, instruction manual, 9 character display with adjustable brightness, removable face plate.

2 IVECO DAB + radio.

- Removable face plate with LCD display
- Front SD card and USB port
- Bluetooth®
- CD/MP3/WMA player
- 4 channels x 40W Max

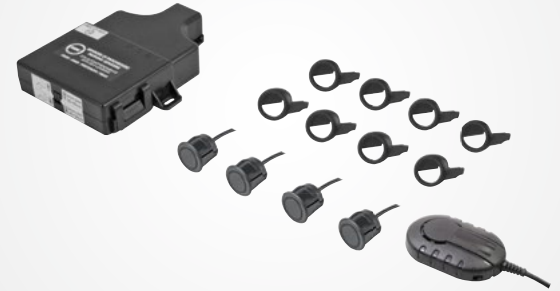
3 IVECO digital radio.

- Removable face plate with LCD DOT matrix white illumination display and integrated Bluetooth®/Audio streaming
- Electronic anti-shock
- DSP Sound effects equaliser (Classic-Rock-Pop-Flat)
- 18 station storage in FM and 12 in AM
- FM-AM-RDS-PLL EON radio
- 1 SD Card slot Max 8GB
- 1 front USB port Max 8GB

4 Blaupunkt Toronto 440 BT.

- Comparable CD player with CD-DA, CD-R, CD-RW support
- 2 Front USB, SD and Aux-in input
- Integrated Bluetooth®, Audio streaming and Phone book access
- FM/AM World Tuner RDS radio, stores up to 25 radio stations
- WMA and MP3 player with function ID3-Tag (shows files and folders)
- Compatible with Ipod, Iphone and Android
- Power 4 x 50W

PN	Description
1 500051516	Portable Navigation IVECO 7" Europa.
500049944	Portable Navigation IVECO 7" Truck Map full EU.
2 500050803	IVECO Dab + Radio.
500051529	IVECO Dab + Radio + steering wheel controls.
3 500050806	IVECO Digital Radio.
4 500051866	Radio Blaupunkt Toronto 440 BT.



1 Wi-Fi rear camera. Tailor-made camera to control rear during reverse gear using Smartphone or Tablet Android /iOS as a monitor through the “IVECO Cam” app.

Characteristics:

- Videos automatically registrated
- Possibility to review registrations from DvR Rear view camera
- When using the Wi-Fi camera, all 3G functions remain active
- A timer keeps the Wi-Fi camera connection active for 60 minutes after vehicle switched off

Parking sensors. In order to reinforce the safety, IVECO Accessories proposes anteriors and posteriors parking sensors for easy manoeuvring and parking. They prevent shocks that can cause unwanted damages to the vehicle. Two ranges are available.

2 Rear parking sensors base kit with buzzer 12V.

- Installation hole: 19mm
- Sensors depth: 15mm

The kit includes:

- 4 paintable front sensors
- Speaker audio-warning in 4 steps
- Cable with connectors to allow an easy installation
- Drill for rear bumper hole

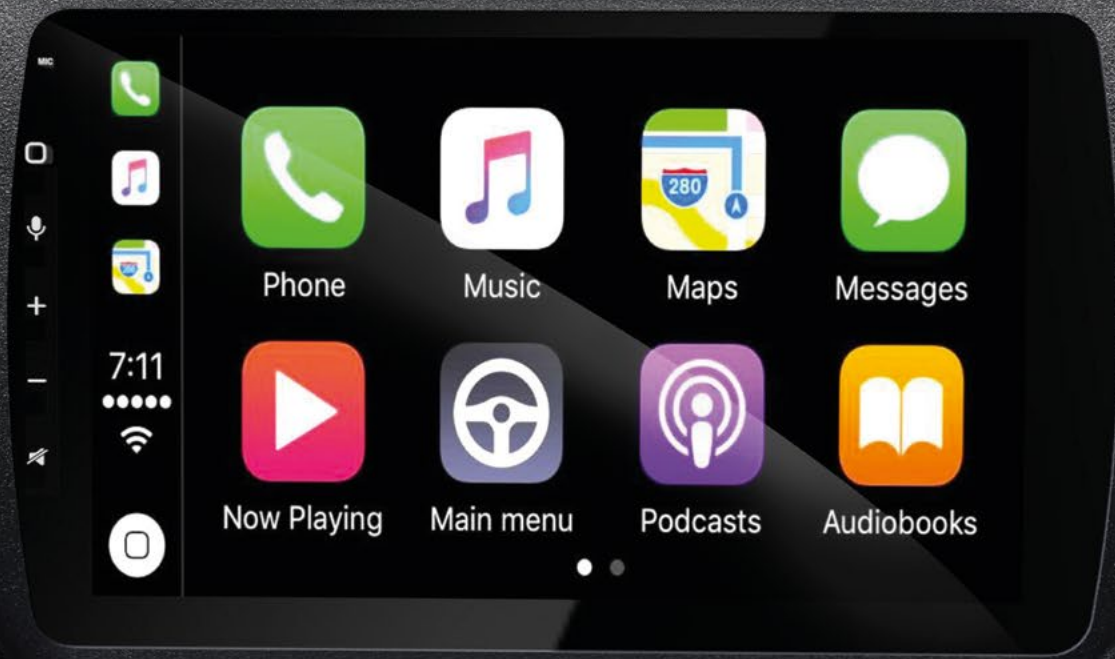
3 Parking sensors for flush fitting 12/24V.

- Installation hole: 18-22mm
- Sensors adjustable depth: 17mm

The kit includes:

- 4 sensors
- 4 Inclined adapters 12°
- 4 Flat adapter
- 4 boxes sensor
- 4 extentions sensor
- 4 biadhesive
- Control box unit, dimensions: 98x72x25mm
- Sensor cable: 4.5+4.5m
- Drill for rear bumper hole

PN	Description
1 500051579	Wi-Fi rear camera for VAN - to be ordered separately PN 5801557593 (third “spare” stop with rear view camera).
500051580	Wi-Fi rear camera for CAB.
2 5802234765	Rear Parking Sensors base kit.
500051501	Front Parking Sensors for flush fitting.
3 500051502	Rear Parking Sensors for flush fitting.
500051504	LED Display with 10.5m cable.



Always connected.

Wireless Apple CarPlay - Wireless Android Auto. Wireless Apple CarPlay / Wireless Android Auto, allows you to connect your iPhone or Android smartphone to your vehicle without needing a USB cable.

Wireless Apple CarPlay / Wireless Android Auto are two standard features that mean an iPhone or Android smartphone can interface with your vehicle. In order to do this, you need a compatible smartphone or an iPhone 5 or later, iOS 7.1 or later, and a vehicle that supports this system.

Wireless Apple CarPlay / Wireless Android Auto functions are the safest way to benefit from your smartphone functionalities when driving.

What does it do exactly? It displays all the most useful smartphone functionalities on your vehicle's display. There is Maps, which is extremely helpful when the vehicle is not fitted with a sat nav, a classic phone function, meaning you can access your contacts easily and make hands-free calls. You can also read and send messages, it is compatible with Apple Music and Spotify as well as third-party apps. Including Sigic, WhatsApp, Tidal, Audible and many others.

Wireless Apple CarPlay and Wireless Android Auto can be controlled in three different ways:

- using Siri/Google Voice for voice commands;
- by tapping the touch display;
- with any handles or knobs used to control the vehicle's infotainment system.

Main characteristics:

- Radio with ADVANCE TUNER AM/FM
- DAB radio + with DAB+ Daily 2021 antenna rescanner
- 9" WVGA TFT LCD DIGITAL monitor
- Capacitive display with high brightness and resolution (1024x600 pixel)
- Anti-reflective touchscreen
- Dynamic graphic interface customised for IVECO
- Pop-up when switching on with IVECO logo
- ON-LINE navigation
- Integrated Bluetooth® version 4.2
- Integrated Wi-Fi
- Resetting of controls on Daily 2021 steering wheel
- Reverse camera input
- RCA cable with four ports
- 1 subwoofer output
- DUAL ZONE A/V function

Multimedia reader:

- MP4/WMV/AVI/MKV video formats
- MP3/WMA/WAV/AAC audio formats
- JPG/JPEG/BMP/PNG image formats

PN	Description
500051638	CarPlay Wireless / Android Auto Wireless.
1 500051639	Wireless CarPlay + camera kit for Daily CAB.
500051640	Wireless CarPlay + camera kit for Daily VAN.



1



2



Always connected.

1 Full vision Android-based multimedia system. The “FULL VISION” multimedia system comes complete with navigation system and rear camera, providing a complete multimedia, navigation & reversing safety solution.

Main characteristics:

- HD 8" IPS capacitive Display - anti-glare
- Octacor processor
- Android 10.0
- Pre-loaded APP: App Alexa / Music / Video / Aux in / A2DP / Wi-Fi Rear view camera Daily (IVECO Up IVECO business APP), YouTube, Netflix, GoogleMap, Easy Connection for Android and iOS Smartphones
- iPhone ready
- 2 USB for audio video files
- Bluetooth® 4.1
- 16GB Hard Disk
- DVR
- Wi-Fi
- IVECO and Camper points of interest
- Radio with Double Tuner RDS and tuner
- Integrated DAB + tuner
- Mask included
- Cables for resetting microphone and antenna
- Steering wheel control (500051526)/OPT: 78319

2 Reverse camera kit for Daily CAB and VAN. Plug&Play reverse camera kit for Wireless CarPlay / FULL VISION ANDROID-BASED MULTIMEDIA SYSTEM.

PN	Description
500051523	Android-based Multimedia System.
1 500051528	Kit full vision for Daily VAN included rear camera.
500051527	Kit full vision for Daily CAB included rear camera.
500051524	Professional camera kit for Daily CAB.
2 500051525	Professional camera kit for Daily VAN.



1 Smartphone Cradle. Smartphone Cradle with integrated Qi technology for a rapid recharge comparing to the classic 5V charger.

General characteristics:

- Tailor-made dashboard bracket
- Power supply kit with plug & play wiring with TYCO connector
- Voltage reducer from 12V to 5V
- Working temperature - 25 + 85°.
- Max. Consumption at Fast Charge: 16mAh at 12V
- Certification of Qi Electromagnetic compliance
- TUV e Red-CE Certification

2 Dashboard Android system with navigation.

The Smart Driving Auxiliary System is an all in one product:

- Capacity touch screen with an 8" High resolution digital monitor
- GPS Navigation system with three different ways to navigate: map, real-time navigation or both
- Speed radar Warning
- DVR with high resolution camera to record in case of collision
- Driving Track Playback
- BT Phone/BT Music
- Full Europe Map Navigation

3 GPS locator Mario. The GPS locator Mario is a next-generation satellite protection system. It allows you to locate the vehicle through an App, displaying the position directly from the phone or computer screen.

Specifications:

- Internet location: allows to check the routes taken, ability to report the kilometers traveled, fuel consumed, the speed limits exceeded and to control the stopping and driving times.
- SAT Alarm: in case of theft, a message will be sent with the geographical location.

PN	Description
1 500051756	Qi Smartphone Cradle.
2 500051508	Dashboard Android System With Navigation.
500051512	Rear Camera for Dashboard Android System.
3 500051469	GPS locator Mario.

Comfort.



More enjoyable travel.

1 Customiser line. Customisation is only possible for a minimum order of **25 sets**. The middle part of the backrest and seat are available in a range of colours and stitching (see below), as is the embroidered logo on the headrest.



SUPREME SEATING COMFORT

Memory foam in the seat and back rest and even the headrest ensure maximum comfort.



PN	Description
500052005	DRIVER'S SEAT standard.
500052006	DRIVER'S SEAT with armrest aperture and backrest adjustment knob aperture.
500052007	PASSENGER SEAT single, streamlined.
1 500052008	TWIN SEAT standard with central safety belts.
500052009	TWIN SEAT with central safety belts and tray.
500052010	HEADREST.

PN	Description
500051968	DRIVER'S SEAT standard.
500051969	DRIVER'S SEAT with armrest aperture and backrest adjustment knob aperture.
500051970	PASSENGER SEAT single, streamlined.
1 500051971	TWIN SEAT standard with central safety belts.
500051972	TWIN SEAT with central safety belts and tray.
500051973	4 PASSENGER SEAT.
500051974	HEADREST.

1



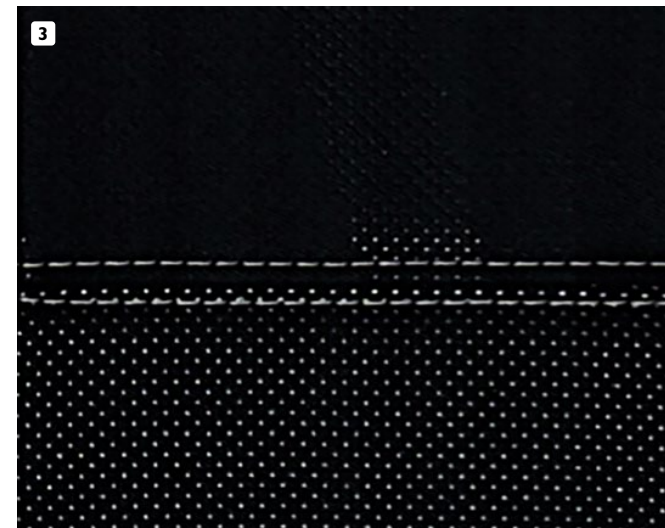
PN	Description
500051716	DRIVER'S SEAT standard.
500051962	DRIVER'S SEAT with armrest aperture and backrest adjustment knob aperture.
500051963	PASSENGER SEAT single, streamlined.
2 500051964	TWIN SEAT standard with central safety belts.
500051965	TWIN SEAT with central safety belts and tray.
500051966	4 PASSENGER SEAT.
500051967	HEADREST.

2



PN	Description
500051975	DRIVER'S SEAT standard.
500051976	DRIVER'S SEAT with armrest aperture and backrest adjustment knob aperture.
500051977	PASSENGER SEAT single, streamlined.
3 500051978	TWIN SEAT standard with central safety belts.
500051979	TWIN SEAT with central safety belts and tray.
500051980	HEADREST.

3



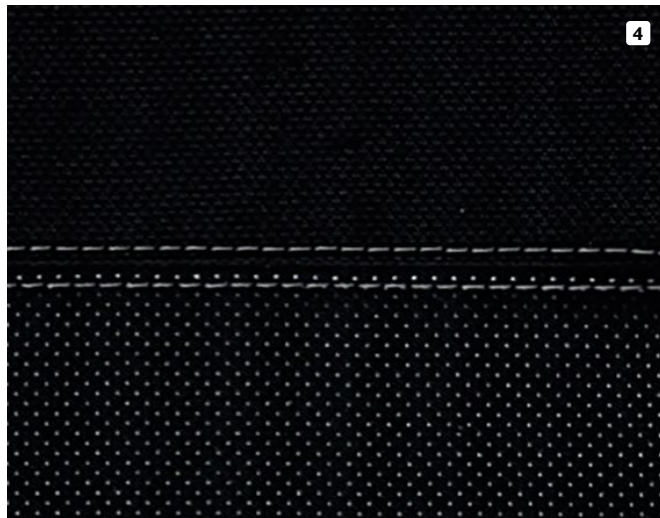
1 Essential line. Middle made from Nabuk faux leather.
Side made from Tecnoprene. Contrasting embroidery and stitching.

2 Worker line. Middle made from fire retardant faux leather.
Side made from magnesium fabric. Contrasting embroidery and stitching.

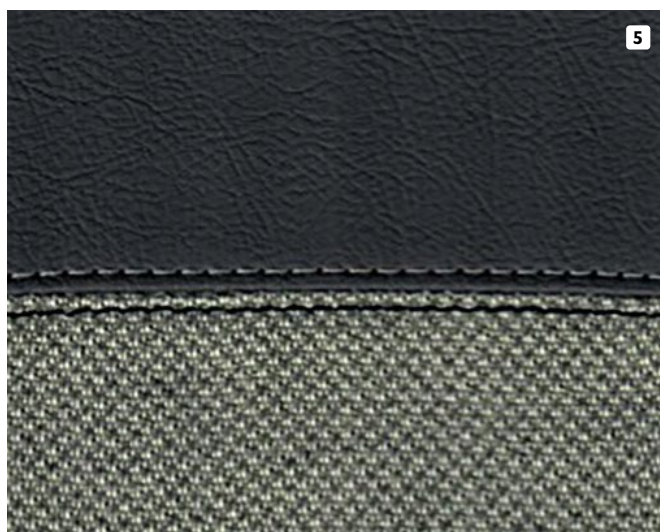
3 Mirror line. Middle and side made from recycled fabric.
Contrasting embroidery and stitching.

4 Amaee line. Central electro-welded panel on recycled fabric.
Contrasting stitching with electro-welded logo.

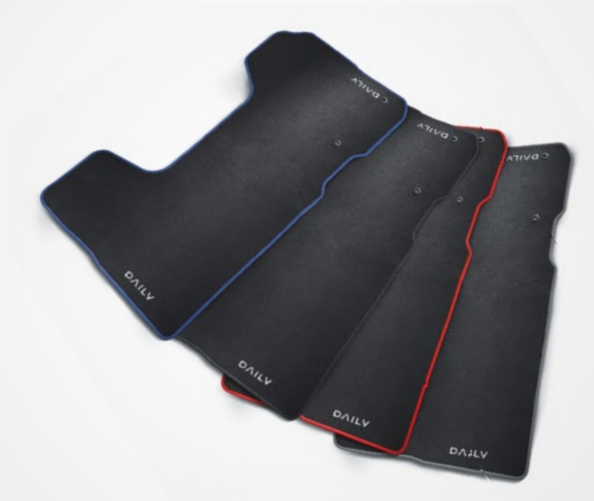
5 Ecofriendly line. Middle made from sealife fabric.
Side made from environmentally friendly faux leather (Natural seed oil based plasticisers - Fabric products made from natural fibres - No heavy metals in stabilisers or pigments).
Contrasting embroidery and stitching.



PN	Description
500051980	DRIVER'S SEAT standard.
500051981	DRIVER'S SEAT with armrest aperture and backrest adjustment knob aperture.
500051982	PASSENGER SEAT single, streamlined.
500051983	TWIN SEAT standard with central safety belts.
500051984	TWIN SEAT with central safety belts and tray.
500051985	HEADREST.



PN	Description
500051989	DRIVER'S SEAT standard.
500051990	DRIVER'S SEAT with armrest aperture and backrest adjustment knob aperture.
500051994	PASSENGER SEAT single, streamlined.
500051995	TWIN SEAT standard with central safety belts.
500051996	TWIN SEAT with central safety belts and tray.
500051997	HEADREST.



1

2



3



More enjoyable travel.

1 Fabric mats. Developed to match the seat cover range, they are customisable with a woven IVECO logo and coloured edges. Double-fixing system guarantees they stay in place to avoid potentially hazardous situations.

2 Valeting kit. Bio-compatible detergents for cleaning your vehicle. Professional line, technological formulation.

4 Product kit:

- Shining Glass 250ml to clean windows
- Perfect Interior 250ml to clean dashboard, steering wheel and mats
- Clean Air 250ml to sanitise air
- Shining Body 250ml to protect the bodywork

3 Tuning kit in stainless steel. To customise the New Daily with precious details that highlight its character and style.

The kit contains:

- Mirror inlay: set of 2 pieces
- Door handle covers: set of 4 pieces

4 Air conditioning. For protecting the cab interior. Acid resistant, washable and resistant to changing shape. With a raised edge to prevent dirt spillage.

PN	Description
500051076	Premium Red.
500051077	Premium Blue.
500051078	Premium Silver.
500051500	Premium Black.
500050618	Valeting kit.
500051759	Tuning kit.
500050920	Air conditioning VAN or CAB 2.3cc.
500050921	Air conditioning VAN or CAB 3.0cc.



PUBLICATION L222870IUK - 04/23

The information and images in this catalogue are provided as a guideline only. IVECO reserves the right to make changes for any commercial or construction reasons at any time without notice.